

Building Information Modeling

BIM



BIM at a glance:

What is BIM?

BIM "Building Information Modeling" is a method to plan, execute and manage building projects based on a virtual building information model.

It offers a central administration of all information relevant to the project.

Aquatherm provides free **BIM** data sets to architects and specialist planners which can be downloaded under www.aquatherm.de/BIM.

The data are available as **Revit** families for the product lines **aquatherm green pipe**, **aquatherm blue pipe** and **aquatherm lilac pipe**.

The data sets for the **aquatherm red pipe**, **aquatherm ti** and **aquatherm black system** product families will follow by the end of 2017.

In addition, the two CAD data formats **dwg** and **stp** are offered for 3D modeling.

Beside graphical 3D models, the **aquatherm Revit** families contain all necessary information to make **BIM**-capable designs: from article numbers, flow rates and analyses, volumes, dry weight and water weight to information for the static calculation of the building.

For more information:

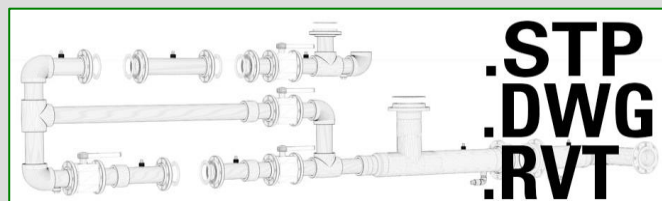
Aquatherm Australia Pty Ltd

T: (02) 9774 1172 (Sydney Office)

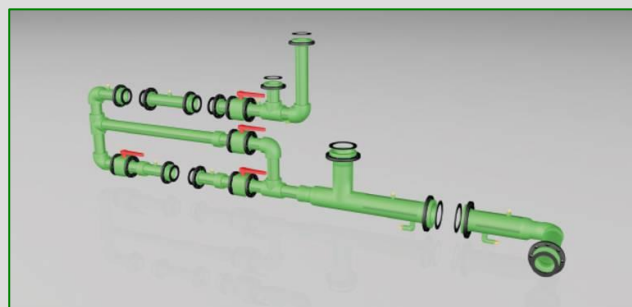
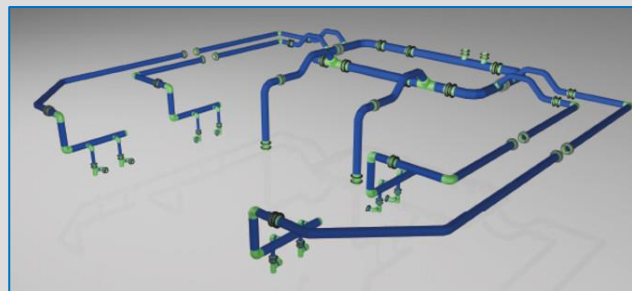
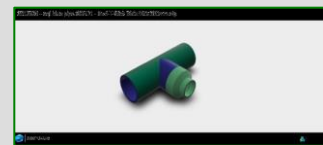
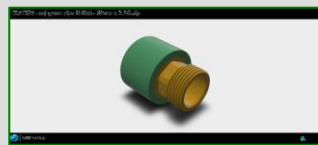
F: (02) 9774 3619

E: aquatherm@aquatherm.com.au

W: www.aquatherm.com.au



Please register to download Software and CAD Data.



aquatherm
state of the pipe

colours of innovation



Management System
ISO 9001:2008
ISO 14001:2004
ISO 50001:2011
www.tuv.com
ID: 009100348

