

HOT TAPPING TOOL

for drilling of pipes under pressure

The hot tapping tool (Art.-No. 50890) is used for drilling pipes for branch connections in the dimensions 40 and 63 mm.

The PP-main pipes aquatherm green pipe, blue pipe and lilac pipe with the **pipe structure S, MS and MF UV** from 75 mm to 630 mm can be drilled under **medium pressure (water) of maximum 6 bar** and a **medium temperature of 10-60° C**.



Both instructions for use of company Hütz + Baumgarten and aquatherm have to be read carefully before first starting. Be familiar with the controls and work-flows before using the tool. The hot tapping tool may only be operated by persons which are trained, instructed and empowered. These persons must be familiar with the instructions for use and act accordingly.

You will find the processing of the weld-on saddles with the appropriate weld-on saddle tools in our technical documentation green pipe, blue pipe and lilac pipe.

Available from March 2017

NEW HOT TAPPING TOOL

for weld-on saddles under pressure

| Art.-No. | Dimension | PU | Box unit | Price € m/pc |
|----------|-------------------------|----|----------|-----------------|
| 50890 | for dimension 40 + 63mm | 1 | | |

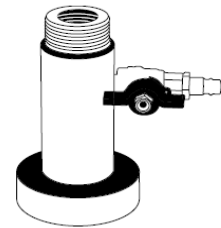


NEW ADAPTER FOR BALL VALVE 40MM

for weld-on saddles under pressure

for Art.-No. 41494

| Art.-No. | Dimension | PU | Box unit | Price € m/pc |
|----------|----------------------|----|----------|-----------------|
| 50891 | for ball valve 40 mm | 1 | | |

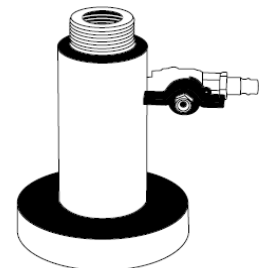


NEW ADAPTER FOR BALL VALVE 63MM

for weld-on saddles under pressure

for Art.-No. 41498

| Art.-No. | Dimension | PU | Box unit | Price € m/pc |
|----------|----------------------|----|----------|-----------------|
| 50892 | for ball valve 63 mm | 1 | | |



NEW PP-MILLING CUTTER 40MM

for weld-on saddles under pressure

for Art.-No. 50891

| Art.-No. | Dimension | PU | Box unit | Price € m/pc |
|----------|-----------|----|----------|-----------------|
| 50893 | 40 mm | 1 | | |

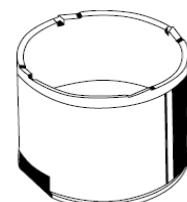


NEW PP-MILLING CUTTER 63MM

for weld-on saddles under pressure

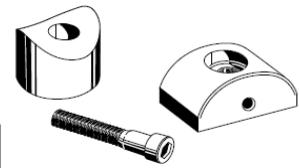
for Art.-No. 50892

| Art.-No. | Dimension | PU | Box unit | Price € m/pc |
|----------|-----------|----|----------|-----------------|
| 50894 | 63 mm | 1 | | |



NEW aquatherm WELD-ON SADDLE TOOL

for weld-on saddles under pressure



| Art.-No. | Dimension | PU | Box unit | Price € m/pc |
|----------|------------------------|----|----------|-----------------|
| 50760 | 75x40mm for 50890 | 1 | | |
| 50761 | 90x40mm for 50890 | 1 | | |
| 50762 | 110x40mm for 50890 | 1 | | |
| 50763 | 125x40mm for 50890 | 1 | | |
| 50764 | 125x63mm for 50890 | 1 | | |
| 50765 | 160x40mm for 50890 | 1 | | |
| 50766 | 160x63mm for 50890 | 1 | | |
| 50767 | 200x40mm for 50890 | 1 | | |
| 50768 | 200x63mm for 50890 | 1 | | |
| 50769 | 250x40mm for 50890 | 1 | | |
| 50770 | 250x63mm for 50890 | 1 | | |
| 50771 | 315x63mm for 50890 | 1 | | |
| 50772 | 355x63mm for 50890 | 1 | | |
| 50773 | 400-630x63mm for 50890 | 1 | | |

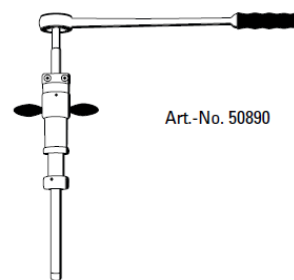
HOT TAPPING TOOL

for drilling pipes under pressure

The hot tapping tool (Art.-No. 50890) is for drilling of pipelines. PP-main pipes from 75 mm to 630 mm can be drilled under pressure.

The following accessories are required for processing:

- adapter for ball valve 40 mm Art.-No. 50891
- adapter for ball valve 63 mm Art.-No. 50892
- PP-milling cutter 40 mm Art.-No. 50893
- PP-milling cutter 63 mm Art.-No. 50894
- aquatherm weld-on saddle tool Art.-No. 50760-50773
- aquatherm weld-on saddles Art.-No. 16175-16300



Art.-No. 50890

Art.-No. 50893



Art.-No. 50894



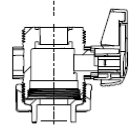
Art.-No. 50891



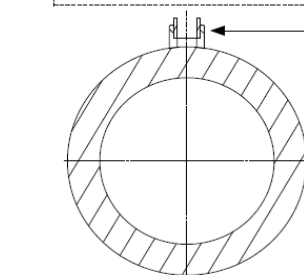
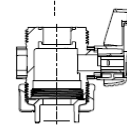
Art.-No. 50892



Art.-No. 41494



Art.-No. 41498



Art.-No. 16175-16300

In combination with
weld-on saddle tool

aquatherm
Tools



aquatherm
state of the pipe

colours of innovation



Management
System
ISO 9001:2008
ISO 14001:2004
ISO 50001:2011
www.tuv.com
ID 0091009348

NEW aquatherm WELD-ON SADDLE

for installation under pressure
in use with tapping tool page 96

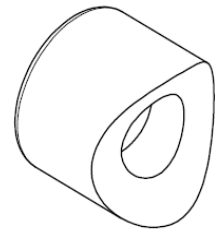
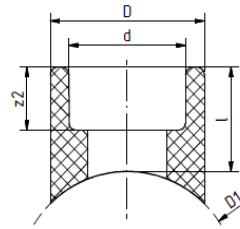
Systems: aquatherm green pipe,
aquatherm blue pipe,
aquatherm lilac pipe

Material: Fusiolen® PP-R

Standard: DIN 16962, DIN EN ISO 15874

Colour: green

Notice do not use with aquatherm blue pipe OT



| SDR | Art.-No. | d | D1 | l | z2 | D | Weight [kg] | System | PU | Box unit | Price € m/pc |
|-----------------------------|----------|----|---------|-------|------|-------|-------------|--------|----|----------|--------------|
| <i>socket welding</i> | | | | | | | | | | | |
| 6 7,4 9 11 17,6 | 16175 | 40 | 75 | 34,00 | 20,5 | 52,00 | 0,040 | • • • | 5 | | |
| | 16181 | 40 | 90 | 34,00 | 20,5 | 52,00 | 0,040 | • • • | 5 | | |
| | 16188 | 40 | 110 | 34,00 | 20,5 | 52,00 | 0,039 | • • • | 5 | | |
| | 16196 | 40 | 125 | 34,00 | 20,5 | 52,00 | 0,038 | • • • | 5 | | |
| | 16198 | 63 | 125 | 38,00 | 27,5 | 84,00 | 0,119 | • • • | 5 | | |
| | 16212 | 40 | 160 | 34,00 | 20,5 | 52,00 | 0,038 | • • • | 5 | | |
| | 16216 | 63 | 160 | 38,00 | 27,5 | 84,00 | 0,993 | • • • | 5 | | |
| | 16231 | 40 | 200 | 34,00 | 20,5 | 52,00 | 0,036 | • • • | 5 | | |
| | 16233 | 63 | 200 | 37,50 | 27,5 | 84,00 | 0,108 | • • • | 5 | | |
| | 16251 | 40 | 250 | 34,00 | 20,5 | 52,00 | 0,036 | • • • | 5 | | |
| | 16253 | 63 | 250 | 37,50 | 27,5 | 84,00 | 0,108 | • • • | 5 | | |
| | 16260 | 63 | 315-355 | 37,50 | 27,5 | 84,00 | 0,106 | • • • | 5 | | |
| | 16300 | 63 | 400-630 | 37,50 | 27,5 | 84,00 | 0,103 | • • • | 5 | | |

Click on below link to view the video “Aquatherm Hot Tap Tool Demo” 

https://www.youtube.com/watch?v=5Q8I_CqAmoM

