

## FLANGE ADAPTER FOR BUTTERFLY VALVES

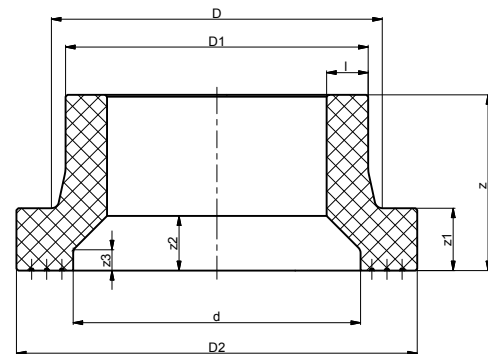
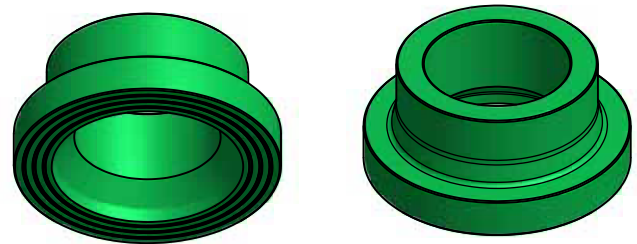
In the industrial pipe and plant construction butterfly valves with flange connection are often used as control and shut-off valves.

Some "exotic" versions of these butterflies cannot be combined with the aquatherm standard flange adapter (Art.-No. 15531-15549 & 2515530-2515554). The inner disk then cannot be opened completely. Therefore in the past adjustments were made to the standard flange adapter.

In order to present also a solution for the special shut-off valves, we now offer special flange adapter.

The dimensions, sizes and classification of the flange adapter can be found in the following drawing and table.

These flange adapter are not included in the current price list and must be requested separately.



### FLANGE ADAPTER

Art.-No.	Dimension	D	D1	D2	d	l	z	z1	z2	z3
	[mm]	[mm]	[mm]	[mm]	[mm]	[mm]	[mm]	[mm]	[mm]	[mm]
0015431	160 SDR 11	175	160	212	152	14,6	93	25	21,6	11
0015435	200 SDR 11	237,42	200	268	204	18,2	130	32	39,2	19
0015439	250 SDR 11	289,56	250	320	255	22,7	130	44	51,2	26
0015443	315 SDR 11	342,75	315	370	308	28,6	177	50	46,1	21
0015445	355 SDR 11	379,09	355	432	348	32,2	202	58	51,7	23
0015447	400 SDR 11	430,84	400	484	392	36,3	195	62	58,3	26
0015449	450 SDR 11	517,86	450	586	445	40,9	180	55	66,4	28
2515430	160 SDR 17,6	175	160	212	152	9,1	93	25	16,1	11
2515434	200 SDR 17,6	237,42	200	268	204	11,4	130	32	32,4	19
2515438	250 SDR 17,6	290,22	250	320	255	14,2	130	35	42,7	26
2515442	315 SDR 17,6	342,7	315	370	308	17,9	177	35	35,4	21
2515444	355 SDR 17,6	378,82	355	432	348	20,1	185	42	39,6	23
2515446	400 SDR 17,6	430,92	400	484	392	22,7	195	44	44,7	26
2515448	450 SDR 17,6	513,72	450	486	445	25,5	140	46	51	28
2515450	500 SDR 17,6	528,58	500	585	490	28,4	152	58	57,4	34
2515454	630 SDR 17,6	644,94	630	688	590	35,7	142	52	40,7	25